

**Division of Criminal Justice Services
Office of Justice Research & Performance**



New York State Crime Report

Andrew M. Cuomo
Governor

Michael C. Green
Executive Deputy Commissioner

Crime in New York State *2012 Final Data*

This report and the attached appendices provide the most recent information available on the number of Index crimes and rates per 100,000 population for each county in New York State. County population data are provided every year by the FBI based on U.S. Census estimates and are used to calculate crime rates. Crime counts are based on official crime reports submitted to DCJS through the Uniform Crime Reporting (UCR) and Incident Based Reporting (IBR) programs. Index offenses include the *violent* crimes of murder, forcible rape, robbery and aggravated assault, and the *property* crimes of burglary, larceny, and motor vehicle theft. Because of their seriousness and frequency, these crimes are used by DCJS and the FBI as indicators of overall crime trends.

The summary includes information on crimes reported in New York State for the last 10 years. These figures include all reports received by DCJS as of September 9, 2013. They differ slightly from those published by the FBI; the FBI reports include estimations for agencies with incomplete reporting, and exclude data submitted after FBI deadlines.

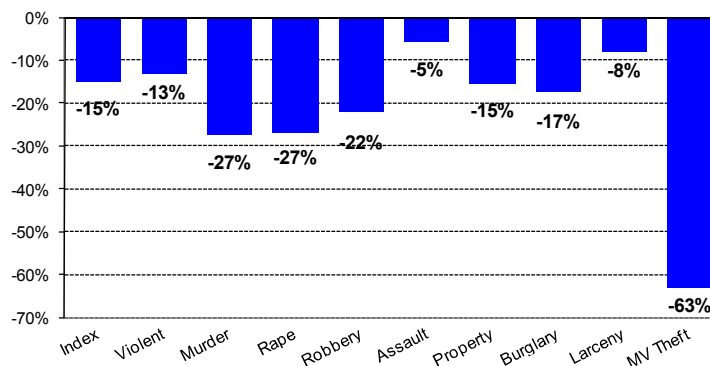
Detailed information on crime data for each reporting agency from 2008 through 2012 is available on the DCJS website:
http://criminaljustice.state.ny.us/crimnet/ojsa/indexcrimes/county_totals.htm

New York State has experienced significant declines in both the crime *rate*—or the number of “Index” crimes per capita—and the crime *volume*—the total number of Index crimes reported over the past decade.

Change in Crime Rates: 2003 vs. 2012

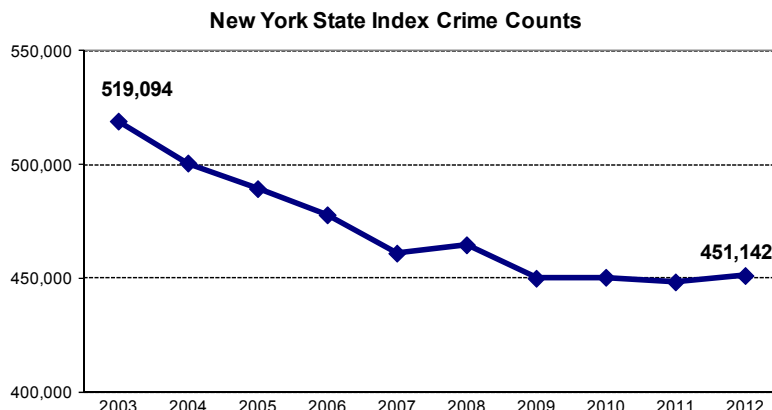
Over the past 10 years, the overall rate of Index crimes per 100,000 residents declined 15%; the rate of violent crimes (murder, rape, robbery, and aggravated assault) fell 13% and property crimes (burglary, larceny, and motor vehicle theft) were down 15%. The largest reductions in crime rates were reported for motor vehicle theft, murder and forcible rape (see Appendix 1 for a statewide, annualized comparison of crime rates).

**Percentage Change in Crime Rates
2003 vs. 2012**



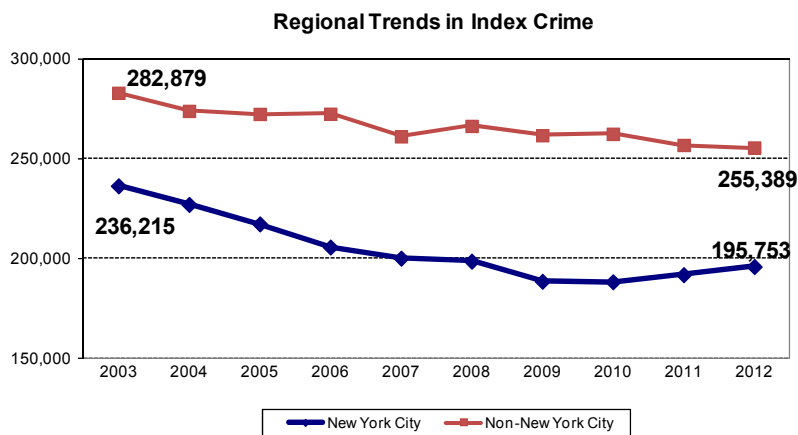
Change in Crime Volume: 2003 vs. 2012

While New York State's crime rate has decreased over the past 10 years, New York has also reported a significant reduction in the actual number of crimes reported. Index crimes have fallen since 2003 and have remained very stable since 2009. The number of major crimes reached the lowest levels ever recorded in 2011, when there were 70,738 fewer crimes reported statewide than in 2003. The state's population increased by approximately 270,000 residents during the same time period.

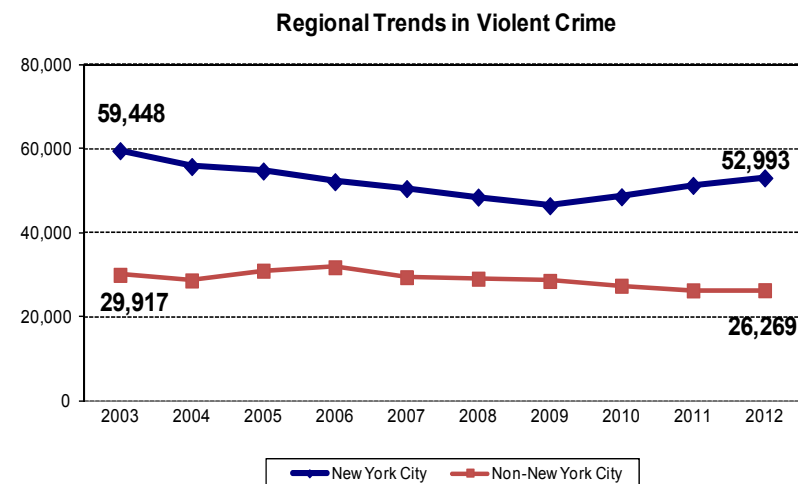


Trends in Regional Crime: 2003 to 2012

The decline in Index crime in New York City over the last 10 years was almost twice as large as the decrease experienced in counties outside of New York City (See Appendix 2).



The number of Index crimes reported in New York City fell 17.1% between 2003 and 2012, while the rate of decline was 9.7% in the rest of the state. The counties outside of New York City accounted for 57% of the reported crime statewide in 2012, and almost 62% of the property crime reported. (See Appendix 2).

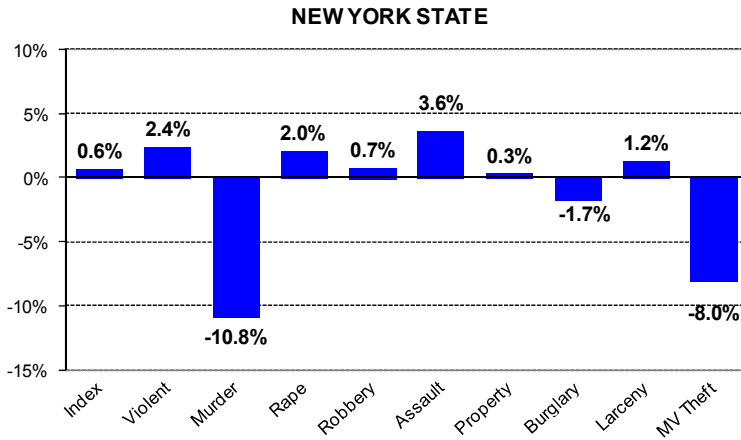


The decline in violent crimes over the past 10 years was about the same in both regions of the state (-11% in New York City and -12% in the non-New York City counties). Both regions also reported declines in each violent crime category during the last 10 years, with the largest percentage drop reported in murders in New York City (-29.8%). While the non-New York City region has seen a steady decline since 2006, New York City reported a 14% increase in violent crime since 2009. (See Appendix 2 and footnote).

Recent Statewide Crime Trends: 2011 vs. 2012

The most recent 2012 crime data show that crime volume in New York State increased slightly between 2011 and 2012.

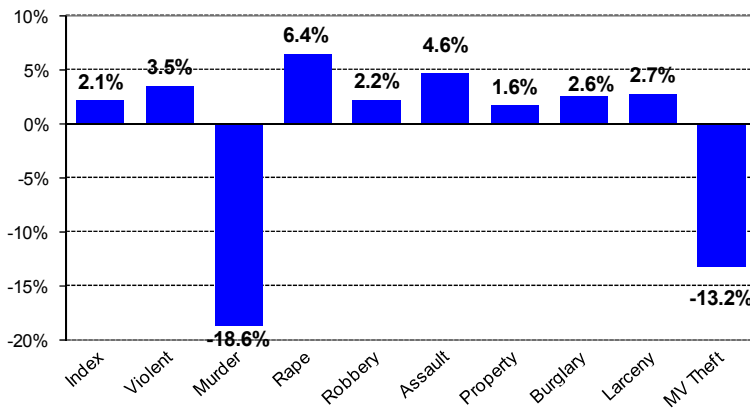
**Percentage Change in Crime Volume
2011 vs. 2012**



In 2012, New York State reported a slight rise of 0.6% in the seven major Index crimes as compared to 2011.

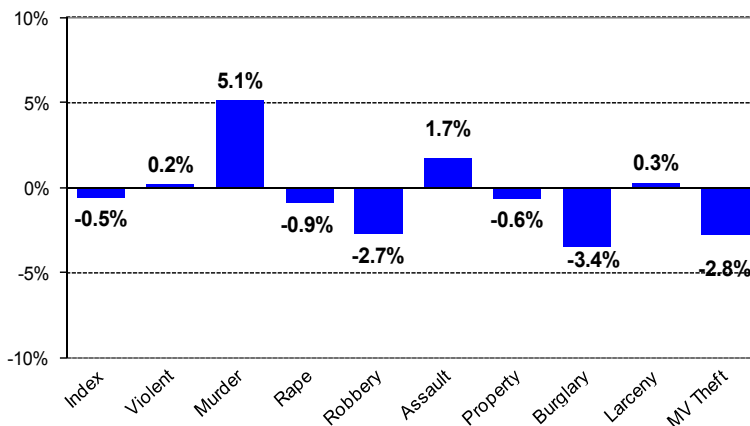
Violent crime categories rose 2.4% while property crime categories were virtually unchanged. The largest declines were reported in murder (-10.8%) and motor vehicle theft (-8.0%) while increases were reported in aggravated assaults (+3.6%), forcible rapes (+2.0%), larcenies (+1.2%), and robberies (+0.7%). The 686 murders reported in 2012 were the fewest since crime reporting began.

NEW YORK CITY



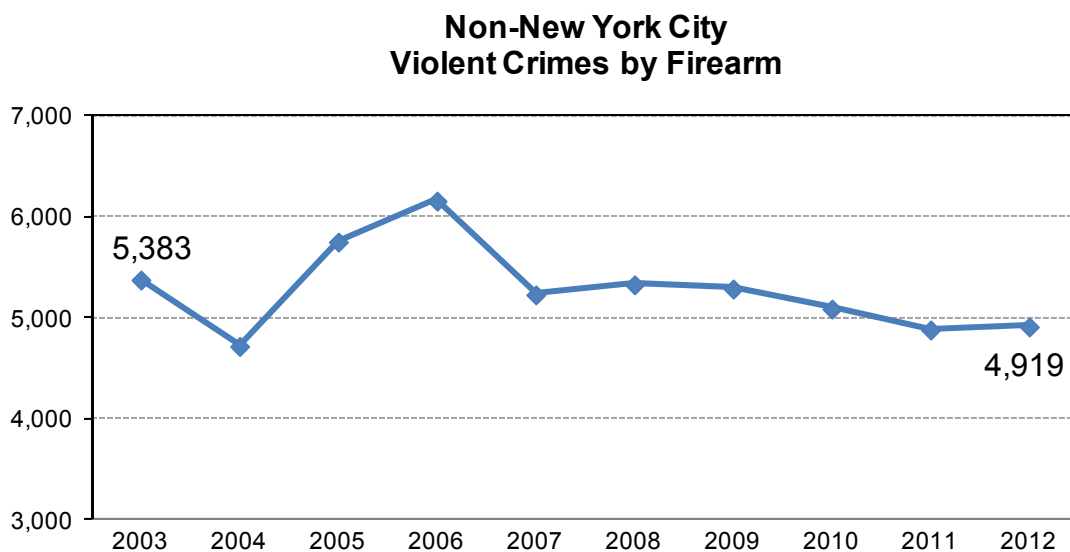
The New York City region reported a 3.5% increase in violent crimes between 2011 and 2012. Each violent crime category rose except for murders which fell by 18.6%. Property crimes in New York City also rose 1.6% in 2012.

NON-NEW YORK CITY



Alternatively, reported crime outside of New York City was virtually unchanged between 2011 and 2012. A slight rise in violent crimes of 0.2% was offset by a 0.6% drop in property crimes. The number of murders rose 5.1% in 2012 after having fallen by 23% in 2011. Crime counts for 2011 and 2012 are presented for each county in Appendix 3; county crime rates for 2012 are provided in Appendix 4.

Trends in Violent Crimes by Firearm: 2003 to 2012



The Uniform Crime Reporting system includes information provided by law enforcement regarding the number of violent crimes reported that involved the use of a firearm. Currently, these figures are only available from the non-New York City region. Over the last 10 years, approximately 19% of all violent crimes were committed with firearms. This percentage has been relatively stable during this time period. In 2012, there were 4,919 firearm-related violent crimes, which was a slight increase from the 4,889 reported in 2011. The highest count was reported in 2006 (6,164) while the lowest count was reported in 2004 (4,726). Appendix 5 provides counts of firearm related crimes for each of the violent Index crimes.

Appendix 1
New York State Index Crime Counts and Rates per 100,000 Population: 2003 - 2012

Counts	2003	2004	2005	2006	2007	2008	2009	2010	2011	2012	% change	
											2011-12	2003-12
Index Crime	519,094	500,650	489,399	477,863	460,992	464,682	449,964	450,385	448,356	451,142	0.6%	-13.1%
Violent Crime	89,365	84,275	85,524	83,815	79,819	77,434	74,831	75,835	77,435	79,262	2.4%	-11.3%
Murder	925	899	875	927	808	835	784	866	769	686	-10.8%	-25.8%
Forcible Rape	3,770	3,561	3,615	3,165	2,925	2,787	2,567	2,765	2,766	2,821	2.0%	-25.2%
Robbery	35,778	33,350	35,004	34,380	31,036	31,742	28,063	28,405	28,346	28,544	0.7%	-20.2%
Agg. Assault	48,892	46,465	46,030	45,343	45,050	42,070	43,417	43,799	45,554	47,211	3.6%	-3.4%
Property Crime	429,729	416,375	403,875	394,048	381,173	387,248	375,133	374,550	370,921	371,880	0.3%	-13.5%
Burglary	75,419	69,929	67,801	68,487	64,834	65,516	62,679	64,685	64,979	63,851	-1.7%	-15.3%
Larceny	309,172	305,667	300,538	293,473	288,366	296,638	290,675	289,459	287,297	290,882	1.2%	-5.9%
MV Theft	45,138	40,779	35,536	32,088	27,973	25,094	21,779	20,406	18,645	17,147	-8.0%	-62.0%
Rates per 100,000 Pop.	2,705.0	2,603.9	2,541.7	2,475.7	2,389.4	2,384.7	2,303.1	2,324.7	2,303.9	2,305.8	0.1%	-14.8%
Violent Crime	465.7	438.3	444.2	434.2	413.7	397.4	383.0	391.4	397.9	405.1	1.8%	-13.0%
Murder	4.8	4.7	4.5	4.8	4.2	4.3	4.0	4.5	4.0	3.5	-11.3%	-27.3%
Forcible Rape	19.6	18.5	18.8	16.4	15.2	14.3	13.1	14.3	14.2	14.4	1.4%	-26.6%
Robbery	186.4	173.5	181.8	178.1	160.9	162.9	143.6	146.6	145.7	145.9	0.2%	-21.8%
Agg. Assault	254.8	241.7	239.1	234.9	233.5	215.9	222.2	226.1	234.1	241.3	3.1%	-5.3%
Property Crime	2,239.3	2,165.6	2,097.5	2,041.5	1,975.6	1,987.3	1,920.1	1,933.2	1,906.0	1,900.7	-0.3%	-15.1%
Burglary	393.0	363.7	352.1	354.8	336.0	336.2	320.8	333.9	333.9	326.3	-2.3%	-17.0%
Larceny	1,611.1	1,589.8	1,560.9	1,520.4	1,494.6	1,522.3	1,487.8	1,494.0	1,476.3	1,486.7	0.7%	-7.7%
MV Theft	235.2	212.1	184.6	166.2	145.0	128.8	111.5	105.3	95.8	87.6	-8.5%	-62.7%

Source: DCJS, Uniform Crime/Incident-Based Reporting system.
Includes all reports received as of 9/09/2013.

Appendix 2
New York State Index Crime Summary by Region: 2003 - 2012

NEW YORK CITY	2003	2004	2005	2006	2007	2008	2009	2010	2011	2012	% change	
											2011-12	2003-12
Index Crime	236,215	226,876	217,132	205,522	199,941	198,419	188,357	188,104	191,666	195,753	2.1%	-17.1%
Violent Crime	59,448	55,688	54,623	52,086	50,453	48,430	46,357	48,489	51,209	52,993	3.5%	-10.9%
Murder	597	570	539	596	496	523	471	536	515	419	-18.6%	-29.8%
Forcible Rape	1,609	1,428	1,412	1,071	875	890	832	1,036	1,092	1,162	6.4%	-27.8%
Robbery	25,989	24,373	24,722	23,511	21,787	22,186	18,597	19,608	19,773	20,201	2.2%	-22.3%
Agg. Assault	31,253	29,317	27,950	26,908	27,295	24,831	26,457	27,309	29,829	31,211	4.6%	-0.1%
Property Crime	176,767	171,188	162,509	153,436	149,488	149,989	142,000	139,615	140,457	142,760	1.6%	-19.2%
Burglary	28,293	26,100	23,210	22,137	20,914	19,867	18,780	17,926	18,159	18,635	2.6%	-34.1%
Larceny	124,846	124,016	120,918	115,363	115,318	117,682	112,526	111,370	112,864	115,935	2.7%	-7.1%
MV Theft	23,628	21,072	18,381	15,936	13,256	12,440	10,694	10,319	9,434	8,190	-13.2%	-65.3%
NON-NEW YORK CITY	282,879	273,774	272,267	272,341	261,051	266,263	261,607	262,281	256,690	255,389	-0.5%	-9.7%
Violent Crime	29,917	28,587	30,901	31,729	29,366	29,004	28,474	27,346	26,226	26,269	0.2%	-12.2%
Murder	328	329	336	331	312	312	313	330	254	267	5.1%	-18.6%
Forcible Rape	2,161	2,133	2,203	2,094	2,050	1,897	1,735	1,729	1,674	1,659	-0.9%	-23.2%
Robbery	9,789	8,977	10,282	10,869	9,249	9,556	9,466	8,797	8,573	8,343	-2.7%	-14.8%
Agg. Assault	17,639	17,148	18,080	18,435	17,755	17,239	16,960	16,490	15,725	16,000	1.7%	-9.3%
Property Crime	252,962	245,187	241,366	240,612	231,685	237,259	233,133	234,935	230,464	229,120	-0.6%	-9.4%
Burglary	47,126	43,829	44,591	46,350	43,920	45,649	43,899	46,759	46,820	45,216	-3.4%	-4.1%
Larceny	184,326	181,651	179,620	178,110	173,048	178,956	178,149	178,089	174,433	174,947	0.3%	-5.1%
MV Theft	21,510	19,707	17,155	16,152	14,717	12,654	11,085	10,087	9,211	8,957	-2.8%	-58.4%

Note: The Penal Law charges of Strangulation 1st (PL 121.13) and 2nd (PL 121.12), which were enacted in November 2010, are classified as aggravated assaults for crime reporting purposes. Prior to enactment, some incidents now classified as Strangulation 2nd (PL 121.12) would have been classified within the UCR as simple assaults and would not have been captured in these Index crime statistics.

Source: DCJS, Uniform Crime/Incident-Based Reporting system.
Includes all reports received as of 9/09/2013.

Appendix 3
New York State Index Crime Summary by County
 2011 vs. 2012

County	Year	Total	Violent	Forcible			Agg.			Burglary	Larceny	MV Theft
				Murder	Rape	Robbery	Assault	Property				
Albany	2011	10,723	1,166	7	48	396	715	9,557	1,570	7,736	251	
	2012	9,960	1,010	5	67	314	624	8,950	1,497	7,191	262	
	% change	-7.1%	-13.4%	-28.6%	39.6%	-20.7%	-12.7%	-6.4%	-4.6%	-7.0%	4.4%	
Allegany	2011	895	64	0	13	4	47	831	190	621	20	
	2012	856	65	2	9	2	52	791	211	561	19	
	% change	-4.4%	1.6%	NA	-30.8%	-50.0%	10.6%	-4.8%	11.1%	-9.7%	-5.0%	
Bronx	2011	35,130	12,267	148	204	4,580	7,335	22,863	3,395	17,358	2,110	
	2012	35,962	12,801	114	220	4,731	7,736	23,161	3,058	18,454	1,649	
	% change	2.4%	4.4%	-23.0%	7.8%	3.3%	5.5%	1.3%	-9.9%	6.3%	-21.8%	
Broome	2011	6,643	521	3	56	126	336	6,122	1,067	4,939	116	
	2012	6,893	600	7	59	133	401	6,293	1,252	4,900	141	
	% change	3.8%	15.2%	133.3%	5.4%	5.6%	19.3%	2.8%	17.3%	-0.8%	21.6%	
Cattaraugus	2011	1,925	162	1	16	17	128	1,763	360	1,368	35	
	2012	2,077	149	1	20	17	111	1,928	431	1,461	36	
	% change	7.9%	-8.0%	0.0%	25.0%	0.0%	-13.3%	9.4%	19.7%	6.8%	2.9%	
Cayuga	2011	1,717	182	3	31	17	131	1,535	306	1,195	34	
	2012	1,806	141	1	13	21	106	1,665	305	1,314	46	
	% change	5.2%	-22.5%	-66.7%	-58.1%	23.5%	-19.1%	8.5%	-0.3%	10.0%	35.3%	
Chautauqua	2011	3,684	301	1	34	64	202	3,383	862	2,434	87	
	2012	3,841	306	2	28	60	216	3,535	817	2,633	85	
	% change	4.3%	1.7%	100.0%	-17.6%	-6.3%	6.9%	4.5%	-5.2%	8.2%	-2.3%	
Chemung	2011	2,278	177	1	13	28	135	2,101	407	1,653	41	
	2012	2,434	222	4	2	46	170	2,212	398	1,768	46	
	% change	6.8%	25.4%	300.0%	-84.6%	64.3%	25.9%	5.3%	-2.2%	7.0%	12.2%	
Chenango	2011	1,071	57	0	17	3	37	1,014	228	768	18	
	2012	1,014	57	0	17	9	31	957	180	752	25	
	% change	-5.3%	0.0%	NA	0.0%	200.0%	-16.2%	-5.6%	-21.1%	-2.1%	38.9%	
Clinton	2011	1,690	74	1	16	6	51	1,616	306	1,284	26	
	2012	1,683	90	0	15	7	68	1,593	274	1,281	38	
	% change	-0.4%	21.6%	-100.0%	-6.3%	16.7%	33.3%	-1.4%	-10.5%	-0.2%	46.2%	
Columbia	2011	1,233	96	1	5	13	77	1,137	251	870	16	
	2012	1,431	104	0	16	17	71	1,327	265	1,050	12	
	% change	16.1%	8.3%	-100.0%	220.0%	30.8%	-7.8%	16.7%	5.6%	20.7%	-25.0%	
Cortland	2011	1,054	72	0	18	8	46	982	199	767	16	
	2012	1,104	64	1	11	19	33	1,040	249	771	20	
	% change	4.7%	-11.1%	NA	-38.9%	137.5%	-28.3%	5.9%	25.1%	0.5%	25.0%	

Appendix 3
New York State Index Crime Summary by County
 2011 vs. 2012

County	Year	Total	Violent	Forcible			Agg.		Burglary	Larceny	MV Theft
				Murder	Rape	Robbery	Assault	Property			
Delaware	2011	813	76	1	16	8	51	737	209	507	21
	2012	763	63	1	11	7	44	700	175	507	18
	% change	-6.2%	-17.1%	0.0%	-31.3%	-12.5%	-13.7%	-5.0%	-16.3%	0.0%	-14.3%
Dutchess	2011	5,671	625	7	42	150	426	5,046	957	3,940	149
	2012	5,886	677	5	30	162	480	5,209	897	4,166	146
	% change	3.8%	8.3%	-28.6%	-28.6%	8.0%	12.7%	3.2%	-6.3%	5.7%	-2.0%
Erie	2011	31,411	4,201	40	195	1,715	2,251	27,210	6,477	19,196	1,537
	2012	31,468	4,227	50	211	1,604	2,362	27,241	6,026	19,734	1,481
	% change	0.2%	0.6%	25.0%	8.2%	-6.5%	4.9%	0.1%	-7.0%	2.8%	-3.6%
Essex	2011	617	47	0	16	0	31	570	183	370	17
	2012	517	43	1	7	3	32	474	130	331	13
	% change	-16.2%	-8.5%	NA	-56.3%	NA	3.2%	-16.8%	-29.0%	-10.5%	-23.5%
Franklin	2011	973	61	1	10	2	48	912	221	662	29
	2012	1,040	57	1	15	6	35	983	212	745	26
	% change	6.9%	-6.6%	0.0%	50.0%	200.0%	-27.1%	7.8%	-4.1%	12.5%	-10.3%
Fulton	2011	1,605	61	0	13	8	40	1,544	326	1,178	40
	2012	1,559	52	0	5	12	35	1,507	301	1,162	44
	% change	-2.9%	-14.8%	NA	-61.5%	50.0%	-12.5%	-2.4%	-7.7%	-1.4%	10.0%
Genesee	2011	1,439	112	0	18	12	82	1,327	260	1,028	39
	2012	1,451	92	0	12	8	72	1,359	266	1,061	32
	% change	0.8%	-17.9%	NA	-33.3%	-33.3%	-12.2%	2.4%	2.3%	3.2%	-17.9%
Greene	2011	830	105	0	8	7	90	725	206	490	29
	2012	721	88	0	7	6	75	633	194	419	20
	% change	-13.1%	-16.2%	NA	-12.5%	-14.3%	-16.7%	-12.7%	-5.8%	-14.5%	-31.0%
Hamilton	2011	57	1	0	1	0	0	56	25	28	3
	2012	78	1	0	0	0	1	77	30	43	4
	% change	36.8%	0.0%	NA	-100.0%	NA	NA	37.5%	20.0%	53.6%	33.3%
Herkimer	2011	1,362	141	1	11	14	115	1,221	309	890	22
	2012	1,308	124	2	9	3	110	1,184	271	883	30
	% change	-4.0%	-12.1%	100.0%	-18.2%	-78.6%	-4.3%	-3.0%	-12.3%	-0.8%	36.4%
Jefferson	2011	2,480	182	2	18	24	138	2,298	368	1,845	85
	2012	2,912	213	1	15	25	172	2,699	460	2,085	154
	% change	17.4%	17.0%	-50.0%	-16.7%	4.2%	24.6%	17.4%	25.0%	13.0%	81.2%
Kings	2011	59,014	18,182	198	347	7,090	10,547	40,832	6,144	31,752	2,936
	2012	60,690	18,673	149	358	7,295	10,871	42,017	6,585	32,752	2,680
	% change	2.8%	2.7%	-24.7%	3.2%	2.9%	3.1%	2.9%	7.2%	3.1%	-8.7%

Appendix 3
New York State Index Crime Summary by County
 2011 vs. 2012

County	Year	Total	Violent	Forcible			Agg.	Property	Burglary	Larceny	MV
				Murder	Rape	Robbery	Assault				Theft
Lewis	2011	419	33	1	4	3	25	386	123	233	30
	2012	420	19	0	0	2	17	401	126	264	11
	% change	0.2%	-42.4%	-100.0%	-100.0%	-33.3%	-32.0%	3.9%	2.4%	13.3%	-63.3%
Livingston	2011	1,074	44	1	10	1	32	1,030	153	859	18
	2012	1,190	54	0	14	1	39	1,136	169	952	15
	% change	10.8%	22.7%	-100.0%	40.0%	0.0%	21.9%	10.3%	10.5%	10.8%	-16.7%
Madison	2011	1,279	53	0	13	5	35	1,226	255	945	26
	2012	1,329	59	0	12	5	42	1,270	269	970	31
	% change	3.9%	11.3%	NA	-7.7%	0.0%	20.0%	3.6%	5.5%	2.6%	19.2%
Monroe	2011	25,666	2,661	40	152	967	1,502	23,005	5,033	16,920	1,052
	2012	25,407	2,672	43	172	1,009	1,448	22,735	4,966	16,793	976
	% change	-1.0%	0.4%	7.5%	13.2%	4.3%	-3.6%	-1.2%	-1.3%	-0.8%	-7.2%
Montgomery	2011	1,084	59	0	4	18	37	1,025	204	799	22
	2012	1,185	58	4	9	12	33	1,127	227	877	23
	% change	9.3%	-1.7%	NA	125.0%	-33.3%	-10.8%	10.0%	11.3%	9.8%	4.5%
Nassau	2011	19,373	2,226	23	63	1,074	1,066	17,147	2,784	13,314	1,049
	2012	19,552	2,456	28	71	1,098	1,259	17,096	2,739	13,356	1,001
	% change	0.9%	10.3%	21.7%	12.7%	2.2%	18.1%	-0.3%	-1.6%	0.3%	-4.6%
New York	2011	50,858	9,021	71	288	3,648	5,014	41,837	3,082	37,856	899
	2012	51,756	9,102	63	295	3,581	5,163	42,654	3,085	38,735	834
	% change	1.8%	0.9%	-11.3%	2.4%	-1.8%	3.0%	2.0%	0.1%	2.3%	-7.2%
Niagara	2011	7,234	811	5	64	231	511	6,423	1,606	4,523	294
	2012	6,947	820	4	48	207	561	6,127	1,437	4,464	226
	% change	-4.0%	1.1%	-20.0%	-25.0%	-10.4%	9.8%	-4.6%	-10.5%	-1.3%	-23.1%
Oneida	2011	5,935	549	7	36	129	377	5,386	1,234	4,002	150
	2012	6,380	596	2	43	164	387	5,784	1,211	4,379	194
	% change	7.5%	8.6%	-71.4%	19.4%	27.1%	2.7%	7.4%	-1.9%	9.4%	29.3%
Onondaga	2011	12,855	1,656	14	113	464	1,065	11,199	2,629	8,070	500
	2012	13,573	1,751	15	110	537	1,089	11,822	2,953	8,289	580
	% change	5.6%	5.7%	7.1%	-2.7%	15.7%	2.3%	5.6%	12.3%	2.7%	16.0%
Ontario	2011	2,103	150	0	24	37	89	1,953	410	1,502	41
	2012	2,175	150	2	36	22	90	2,025	432	1,552	41
	% change	3.4%	0.0%	NA	50.0%	-40.5%	1.1%	3.7%	5.4%	3.3%	0.0%
Orange	2011	8,971	1,007	9	59	392	547	7,964	1,405	6,322	237
	2012	9,456	1,075	9	67	373	626	8,381	1,344	6,798	239
	% change	5.4%	6.8%	0.0%	13.6%	-4.8%	14.4%	5.2%	-4.3%	7.5%	0.8%

Appendix 3
New York State Index Crime Summary by County
 2011 vs. 2012

County	Year	Total	Violent	Forcible			Agg.			Burglary	Larceny	MV Theft
				Murder	Rape	Robbery	Assault	Property				
Orleans	2011	1,003	82	2	8	13	59	921	227	666	28	
	2012	916	61	0	5	9	47	855	192	637	26	
	% change	-8.7%	-25.6%	-100.0%	-37.5%	-30.8%	-20.3%	-7.2%	-15.4%	-4.4%	-7.1%	
Oswego	2011	3,205	181	2	28	22	129	3,024	651	2,273	100	
	2012	3,255	200	0	33	26	141	3,055	771	2,183	101	
	% change	1.6%	10.5%	-100.0%	17.9%	18.2%	9.3%	1.0%	18.4%	-4.0%	1.0%	
Otsego	2011	1,146	119	1	6	12	100	1,027	252	751	24	
	2012	982	78	0	14	13	51	904	186	693	25	
	% change	-14.3%	-34.5%	-100.0%	133.3%	8.3%	-49.0%	-12.0%	-26.2%	-7.7%	4.2%	
Putnam	2011	860	66	1	3	8	54	794	178	598	18	
	2012	875	41	0	7	8	26	834	188	613	33	
	% change	1.7%	-37.9%	-100.0%	133.3%	0.0%	-51.9%	5.0%	5.6%	2.5%	83.3%	
Queens	2011	39,863	10,311	82	221	4,057	5,951	29,552	4,815	21,588	3,149	
	2012	40,199	10,753	83	254	4,149	6,267	29,446	5,181	21,550	2,715	
	% change	0.8%	4.3%	1.2%	14.9%	2.3%	5.3%	-0.4%	7.6%	-0.2%	-13.8%	
Rensselaer	2011	4,682	485	1	42	128	314	4,197	1,150	2,898	149	
	2012	4,579	445	9	28	130	278	4,134	962	3,037	135	
	% change	-2.2%	-8.2%	800.0%	-33.3%	1.6%	-11.5%	-1.5%	-16.3%	4.8%	-9.4%	
Richmond	2011	6,801	1,428	16	32	398	982	5,373	723	4,310	340	
	2012	7,146	1,664	10	35	445	1,174	5,482	726	4,444	312	
	% change	5.1%	16.5%	-37.5%	9.4%	11.8%	19.6%	2.0%	0.4%	3.1%	-8.2%	
Rockland	2011	4,565	554	3	30	167	354	4,011	518	3,389	104	
	2012	4,321	498	2	29	144	323	3,823	540	3,156	127	
	% change	-5.3%	-10.1%	-33.3%	-3.3%	-13.8%	-8.8%	-4.7%	4.2%	-6.9%	22.1%	
St Lawrence	2011	2,513	143	2	21	10	110	2,370	535	1,790	45	
	2012	2,238	122	0	14	11	97	2,116	417	1,659	40	
	% change	-10.9%	-14.7%	-100.0%	-33.3%	10.0%	-11.8%	-10.7%	-22.1%	-7.3%	-11.1%	
Saratoga	2011	3,075	132	2	18	20	92	2,943	502	2,383	58	
	2012	3,239	153	2	18	19	114	3,086	542	2,489	55	
	% change	5.3%	15.9%	0.0%	0.0%	-5.0%	23.9%	4.9%	8.0%	4.4%	-5.2%	
Schenectady	2011	5,538	687	4	43	219	421	4,851	1,145	3,484	222	
	2012	5,591	700	7	37	226	430	4,891	1,061	3,639	191	
	% change	1.0%	1.9%	75.0%	-14.0%	3.2%	2.1%	0.8%	-7.3%	4.4%	-14.0%	
Schoharie	2011	433	15	0	3	1	11	418	122	283	13	
	2012	494	19	0	6	1	12	475	130	333	12	
	% change	14.1%	26.7%	NA	100.0%	0.0%	9.1%	13.6%	6.6%	17.7%	-7.7%	

Appendix 3
New York State Index Crime Summary by County
 2011 vs. 2012

County	Year	Total	Violent	Forcible			Agg.	Property	Burglary	Larceny	MV
				Murder	Rape	Robbery	Assault				Theft
Schuyler	2011	172	18	0	5	0	13	154	32	115	7
	2012	185	21	1	4	1	15	164	40	115	9
	% change	7.6%	16.7%	NA	-20.0%	NA	15.4%	6.5%	25.0%	0.0%	28.6%
Seneca	2011	681	63	1	7	4	51	618	112	488	18
	2012	848	59	0	5	3	51	789	119	661	9
	% change	24.5%	-6.3%	-100.0%	-28.6%	-25.0%	0.0%	27.7%	6.3%	35.5%	-50.0%
Steuben	2011	1,683	138	2	27	17	92	1,545	314	1,194	37
	2012	1,834	156	0	40	15	101	1,678	348	1,276	54
	% change	9.0%	13.0%	-100.0%	48.1%	-11.8%	9.8%	8.6%	10.8%	6.9%	45.9%
Suffolk	2011	31,405	2,217	32	63	818	1,304	29,188	5,109	22,805	1,274
	2012	28,851	2,131	23	51	756	1,301	26,720	4,357	21,181	1,182
	% change	-8.1%	-3.9%	-28.1%	-19.0%	-7.6%	-0.2%	-8.5%	-14.7%	-7.1%	-7.2%
Sullivan	2011	1,938	200	2	20	25	153	1,738	549	1,145	44
	2012	1,930	181	1	34	29	117	1,749	568	1,140	41
	% change	-0.4%	-9.5%	-50.0%	70.0%	16.0%	-23.5%	0.6%	3.5%	-0.4%	-6.8%
Tioga	2011	591	34	0	5	3	26	557	149	390	18
	2012	667	35	0	0	7	28	632	151	466	15
	% change	12.9%	2.9%	NA	-100.0%	133.3%	7.7%	13.5%	1.3%	19.5%	-16.7%
Tompkins	2011	1,989	73	0	5	20	48	1,916	246	1,638	32
	2012	2,159	87	0	10	33	44	2,072	293	1,739	40
	% change	8.5%	19.2%	NA	100.0%	65.0%	-8.3%	8.1%	19.1%	6.2%	25.0%
Ulster	2011	3,772	335	2	43	65	225	3,437	752	2,597	88
	2012	3,937	279	1	31	38	209	3,658	729	2,851	78
	% change	4.4%	-16.7%	-50.0%	-27.9%	-41.5%	-7.1%	6.4%	-3.1%	9.8%	-11.4%
Warren	2011	1,486	106	3	19	12	72	1,380	225	1,129	26
	2012	1,420	125	3	18	9	95	1,295	170	1,099	26
	% change	-4.4%	17.9%	0.0%	-5.3%	-25.0%	31.9%	-6.2%	-24.4%	-2.7%	0.0%
Washington	2011	865	96	3	15	6	72	769	185	567	17
	2012	966	76	6	11	7	52	890	236	623	31
	% change	11.7%	-20.8%	100.0%	-26.7%	16.7%	-27.8%	15.7%	27.6%	9.9%	82.4%
Wayne	2011	1,707	141	0	30	24	87	1,566	414	1,108	44
	2012	1,758	130	1	20	18	91	1,628	436	1,153	39
	% change	3.0%	-7.8%	NA	-33.3%	-25.0%	4.6%	4.0%	5.3%	4.1%	-11.4%
Westchester	2011	16,279	2,558	21	71	1,034	1,432	13,721	2,125	10,818	778
	2012	14,949	2,447	20	72	923	1,432	12,502	1,879	9,991	632
	% change	-8.2%	-4.3%	-4.8%	1.4%	-10.7%	0.0%	-8.9%	-11.6%	-7.6%	-18.8%

Appendix 3
New York State Index Crime Summary by County
 2011 vs. 2012

County	Year	Total	Violent	Forcible			Agg.	Property	Burglary	Larceny	MV
				Murder	Rape	Robbery	Assault				Theft
Wyoming	2011	528	37	0	5	2	30	491	96	381	14
	2012	551	50	0	5	6	39	501	76	408	17
	% change	4.4%	35.1%	NA	0.0%	200.0%	30.0%	2.0%	-20.8%	7.1%	21.4%
Yates	2011	410	13	0	0	0	13	397	109	285	3
	2012	428	20	0	6	0	14	408	111	293	4
	% change	4.4%	53.8%	NA	NA	NA	7.7%	2.8%	1.8%	2.8%	33.3%

Note: NA indicates that the percentage change is not applicable because the count in 2011 was zero.

Source: DCJS, Uniform Crime/Incident-Based Reporting system.

Includes all reports received as of 9/09/2013.

Appendix 4
New York State Index Crime Summary by County: 2012
Rates per 100,000 Population

County	Crime Rate			County	Crime Rate		
	Index	Violent	Property		Index	Violent	Property
Albany	3,263.4	330.9	2,932.5	Onondaga	2,891.1	373.0	2,518.1
Allegany	1,745.5	132.5	1,612.9	Ontario	1,993.4	137.5	1,855.9
Bronx	2,560.5	911.4	1,649.1	Orange	2,508.9	285.2	2,223.7
Broome	3,444.7	299.8	3,144.8	Orleans	2,137.6	142.4	1,995.2
Cattaraugus	2,650.5	190.1	2,460.3	Oswego	2,648.8	162.7	2,486.0
Cayuga	2,252.8	175.9	2,076.9	Otsego	1,577.5	125.3	1,452.2
Chautauqua	2,843.2	226.5	2,616.7	Putnam	870.9	40.8	830.1
Chemung	2,725.0	248.5	2,476.5	Queens	1,777.2	475.4	1,301.8
Chenango	2,012.3	113.1	1,899.2	Rensselaer	2,857.3	277.7	2,579.6
Clinton	2,042.8	109.2	1,933.6	Richmond	1,503.5	350.1	1,153.4
Columbia	2,275.5	165.4	2,110.1	Rockland	1,363.7	157.2	1,206.5
Cortland	2,224.5	129.0	2,095.5	St Lawrence	1,458.5	68.9	1,389.6
Delaware	1,624.3	134.1	1,490.2	Saratoga	3,586.4	449.0	3,137.4
Dutchess	1,964.6	226.0	1,738.6	Schenectady	1,508.2	58.0	1,450.2
Erie	3,409.4	458.0	2,951.4	Schoharie	1,002.2	113.8	888.4
Essex	1,364.7	113.5	1,251.2	Schuyler	2,396.3	166.7	2,229.6
Franklin	2,006.6	110.0	1,896.6	Seneca	1,993.0	108.6	1,884.4
Fulton	2,816.8	94.0	2,722.8	Steuben	1,842.0	156.7	1,685.3
Genesee	2,410.7	152.9	2,257.9	Suffolk	1,914.6	141.4	1,773.2
Greene	1,464.9	178.8	1,286.1	Sullivan	2,496.3	234.1	2,262.2
Kings	1,618.6	20.8	1,597.8	Tioga	1,299.7	68.2	1,231.5
Hamilton	2,027.7	192.2	1,835.5	Tompkins	2,111.0	85.1	2,026.0
Herkimer	2,456.4	179.7	2,276.8	Ulster	2,146.3	152.1	1,994.2
Jefferson	2,389.6	735.2	1,654.4	Warren	2,145.5	188.9	1,956.6
Lewis	1,543.1	69.8	1,473.3	Washington	1,521.1	119.7	1,401.4
Livingston	1,819.0	82.5	1,736.4	Wayne	1,871.4	138.4	1,733.0
Madison	1,801.8	80.0	1,721.8	Westchester	1,555.5	254.6	1,300.9
Monroe	3,389.2	356.4	3,032.7	Wyoming	1,306.6	118.6	1,188.0
Montgomery	2,361.3	115.6	2,245.7	Yates	1,672.5	78.2	1,594.3
Nassau	1,446.5	181.7	1,264.8				
New York	3,218.6	566.0	2,652.5	New York City	2,361.5	639.3	1,722.2
Niagara	3,198.8	377.6	2,821.2	Non-New York City	2,264.8	233.0	2,031.9
Oneida	2,708.5	253.0	2,455.5	New York State	2,305.8	405.1	1,900.7

Source: DCJS, Uniform Crime/Incident-Based Reporting system.
Includes all reports received as of 9/09/2013.

Appendix 5
Violent Crimes and Firearms
Non-New York City Region

	2003	2004	2005	2006	2007	2008	2009	2010	2011	2012	2011 vs. 12	2003 vs. 12
											% Change	% Change
Violent Crimes	29,917	28,587	30,901	31,729	29,366	29,004	28,474	27,346	26,226	26,269	0.2%	-12.2%
Firearm Related	5,383	4,726	5,759	6,164	5,236	5,336	5,294	5,096	4,889	4,919	0.6%	-8.6%
Percent Firearm	18.0%	16.5%	18.6%	19.4%	17.8%	18.4%	18.6%	18.6%	18.6%	18.7%		
Murder	328	329	336	331	312	312	313	330	254	267	5.1%	-18.6%
Firearm Related	183	156	168	185	175	179	181	200	132	169	28.0%	-7.7%
Percent Firearm	55.8%	47.4%	50.0%	55.9%	56.1%	57.4%	57.8%	60.6%	52.0%	63.3%		
Forcible Rape	2,161	2,133	2,203	2,094	2,050	1,897	1,735	1,729	1,674	1,659	-0.9%	-23.2%
Firearm Related	47	55	52	35	31	36	23	14	20	32	60.0%	-31.9%
Percent Firearm	2.2%	2.6%	2.4%	1.7%	1.5%	1.9%	1.3%	0.8%	1.2%	1.9%		
Robbery	9,789	8,977	10,282	10,869	9,249	9,556	9,466	8,797	8,573	8,343	-2.7%	-14.8%
Firearm Related	3,036	2,607	3,252	3,414	2,687	2,831	2,808	2,550	2,520	2,453	-2.7%	-19.2%
Percent Firearm	31.0%	29.0%	31.6%	31.4%	29.1%	29.6%	29.7%	29.0%	29.4%	29.4%		
Aggravated Assault	17,639	17,148	18,080	18,435	17,755	17,239	16,960	16,490	15,725	16,000	1.7%	-9.3%
Firearm Related	2,117	1,908	2,287	2,530	2,343	2,290	2,282	2,332	2,217	2,265	2.2%	7.0%
Percent Firearm	12.0%	11.1%	12.6%	13.7%	13.2%	13.3%	13.5%	14.1%	14.1%	14.2%		

Source: DCJS, Uniform Crime/Incident-Based Reporting system.
Includes all reports received as of 9/09/2013.